

# Business Continuity Server™ for Exchange

## When Data Loss is Simply Not an Option

Eliminate business risk with real-time protection and instant recovery of Exchange data

### The Exchange Challenge: Protection, Recoverability, Compliance

Exchange email has become critical to the operation of every business. Ensuring Exchange email availability is not an ideal but a necessity.

IT departments must meet these challenges with higher service levels and fewer resources than ever before. The need for a complete, high performance easy-to-use solution for protecting business-critical Exchange data is clear.

### The Asempra Answer

The Business Continuity Server (BCS) is the complete, high performance, easy-to-use solution that addresses today's regulatory, data protection, and business continuity challenges.

The Business Continuity Server uses Asempra's patent-pending Virtual On Demand Recovery™ processes to deliver instantaneous application and data availability for Exchange, from any location, at any point-in-time with guaranteed data usability after every recovery.

### Continuous Protection of Exchange Servers

When Asempra says continuous, we mean it! We protect every Exchange transaction in real-time so that you can recover anything from an email to complete Exchange servers at any point-in-time.

The BCS guarantees that the data recovered will be in an uncorrupted state, eliminating the need for multiple, costly manual recoveries usually associated with other types of data protection and recovery technologies. A unified Web-based Management Console puts all the functionality necessary into the hands of IT staff to answer all of today's top business challenges.

The BCS transparently and continuously protects Exchange data as transaction events occur in real-time. Backup windows are eliminated and recovery point objectives (RPO) approach zero data loss.

The BCS empowers IT to recover exactly the data you want — be it an individual email message, a specific Inbox or Calendar, a user's Mailbox, all the way up to an entire Storage group or Exchange Server.

### Granular Recovery of Storage Groups and Email Messages

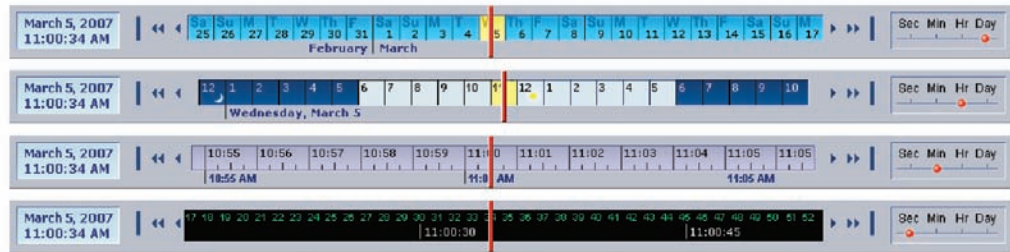
Before Asempra, primitive tools forced IT support staff to recover the entire Exchange server, validate the recovered data set, then manually search it to find the desired email message, and finally, recover only that message. It was a manual, labor-intensive process that could cost hours or days of lost productivity.

Now Asempra puts fully granular historical data at your fingertips. Turn back the clock to any point in time by dragging the indicator on Asempra's timeline. Zoom the timeline to focus on days, hours, minutes or even seconds.



# Business Continuity Server for Exchange

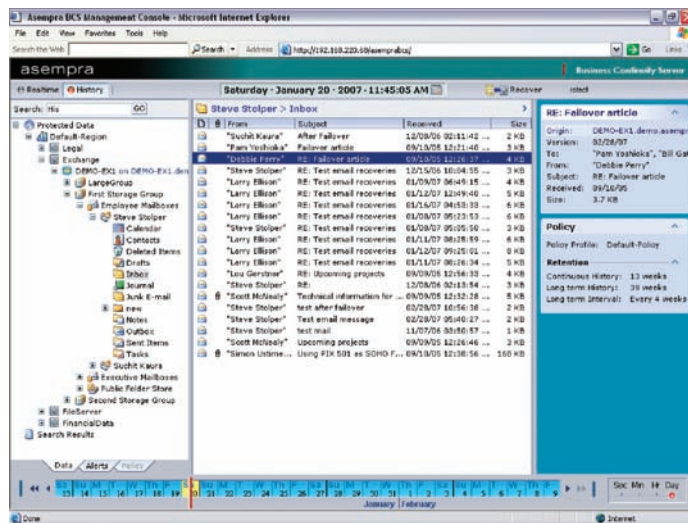
Empower IT to recover an individual email, a user's mailbox, or the entire Exchange server



## Recovery Made Simple

Your Exchange data is displayed exactly as it was at the time indicated on the timeline. No new user interface to learn — simply browse mailboxes, folders and messages as you normally do.

Browse Exchange data from any point in time

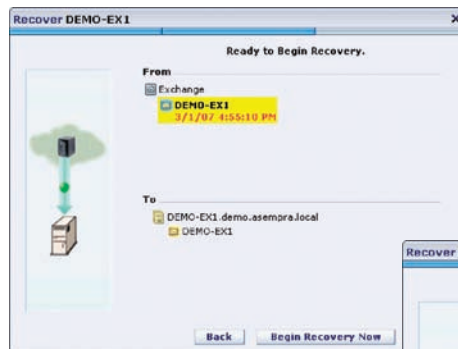


## Click to Recover

Simply select the desired data — entire Exchange Server, individual Storage Group, Mailbox, Inbox, or individual message — and click Recover. Your data will be available in seconds.

The Recover Wizard confirms the object and version to be recovered, be it an entire Exchange Server:

Point & click global to granular recovery



...or an individual email message:



Recover an Exchange data set of any size in seconds — not hours

## Clustering support for Microsoft and multiple BCS nodes

### Data Recovery Without Waiting

The recovery time for Exchange users to be productive again is a key concern of all IT shops. Asempra's patent-pending Virtual On-Demand Recovery™ reduces recovery time objectives (RTO) to seconds, without downtime on the server. Recovery of an entire exchange server involves near zero downtime.

With traditional data protection products, data recovery is not only painful and time-consuming, it may deliver data that is corrupted and unusable. The Business Continuity Server's sophisticated event capturing and indexing technologies guarantee data is completely usable on the first recovery.

The Business Continuity Server avoids recovering inconsistent or corrupted data through the use of its patented comprehensive Real-Time Event Journaling™ and three-dimensional continuous object store indexing techniques (real-time data, metadata, and event).

These elements are combined by the Business Continuity Server to preserve a true data history of the application with consistency marking to ensure application recoverability across multiple dimensions of time (second, minutes, hours, and days), object granularity, and application events.

### Disaster Recovery and Exchange Failover

The Business Continuity Server provides disaster recovery (DR) for your Microsoft Exchange data by protecting data over existing IP LAN and WAN networks.

The BCS also manages application server failover. For example, in the event of an Exchange failure, the affected servers are recovered to standby servers, and the BCS updates the Active Directory (AD) and Domain Name Service (DNS) entries so that users are routed to the new Exchange server. Users are back online in minutes or even seconds.

### Backup Windows Eliminated

BCS 2.5 provides seamless integration with tape backup infrastructures, such as Tivoli, Symantec, Veritas, or Legato/EMC. Using the Common Internet File System (CIFS) protocol, the BCS can eliminate or substantially reduce backup windows on protected servers by using the CIFS function to export a mountable CIFS volume. This eliminates the backup window on the protected servers, and offers savings on the deployment of new servers by removing the need to obtain licenses for new servers.

## Seamless integration with tape backup infrastructures

### Scalable Continuous Real-time Data Protection

The combination of Microsoft cluster support, clustering capability for up to four BCS nodes, and our 64-bit Linux based file system give the BCS solution the scalability to handle hundreds of data sources and petabytes of protected storage with no single point of failure. With VMware support, the BCS can protect virtualized machines, leveraging hardware investments and protecting vital business data.

### Global, Policy-Based Management Platform

The BCS provides a real-time, policy-driven recovery management platform. Set two levels of retention policy—Real-time CDP and near CDP—for each protected Data Set. The BCS ensures that Exchange data is secure and available for as long—and only as long—as policy specifies.

Asempra's powerful inheritance mechanism allows you to enforce consistent policies across the company or specify different policies for each Exchange server.

The BCS enables instantaneous application availability and data recovery for Windows-based data in minutes or seconds, from any location, at any point-in-time with guaranteed data usability and reliability and dramatically reduces the cost and complexity of mid-market IT data protection by consolidating the needs of real-time data protection with history, replication snapshot backup, into just one solution.

